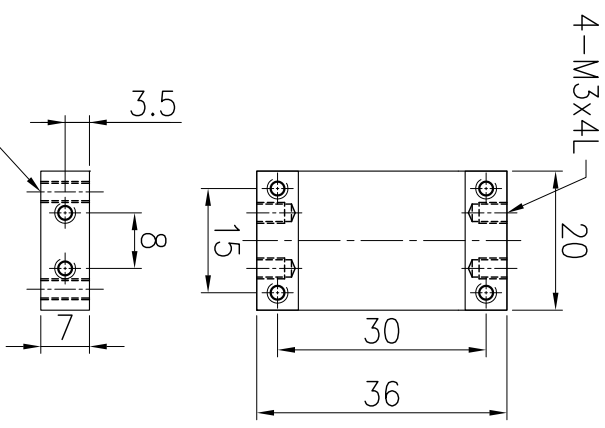
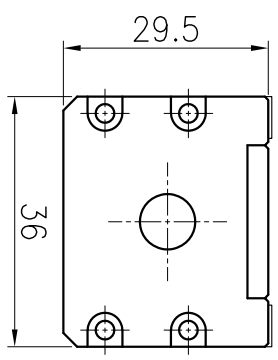
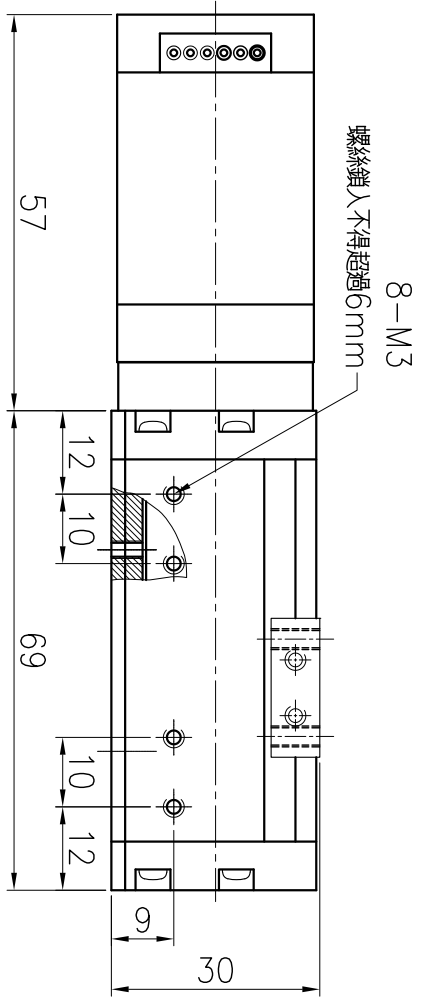
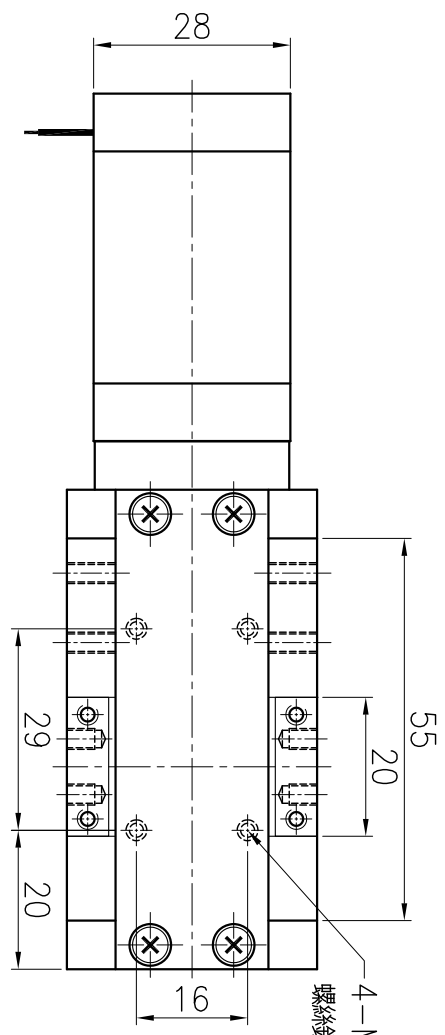
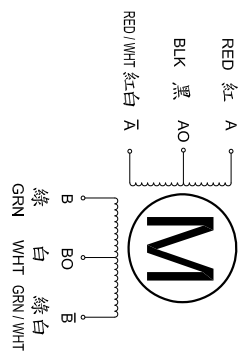


COLORS OF LEAD WIRES



滑塊尺寸圖

SPECIFICATIONS

PHASE	相數	2	PHASE	COMMENTS
STEP ANGLE	步進角	1.8 ± 5%	/STEP	引出線數:6
VOLTAGE	額定電壓	4.56	V	
CURRENT	額定電流	0.95	A/PHASE	總電阻:指測量A與AO的電阻值 線電感:指測量A與AO的電感值
RESISTANCE	線電阻	4.8 ± 10%	Ω /PHASE	
INDUCTANCE	線電感	1.9 ± 20%	mH/PHASE	
LINEAR TRAVEL PER STEP	每步移動距離	0.01	mm/step	
LEAD DIAMETER	導程直徑	ø6.0	mm	
LEAD SCREW LEAD	導程	2.0	mm	
Stroke	滑台行程	30	mm	重量: 350g

Dimamotor 帝馬科技股份有限公司

品名	TN2P02-03A	發行日期	20200317	版次	B
----	------------	------	----------	----	---

